

SEE DRAWING "FR-10001"
FOR DIMENSION CHART

GENERAL NOTES:

ALL INDUSTRIAL VOLTAGES AVAILABLE FOR ELECTRICAL COMPONENTS.

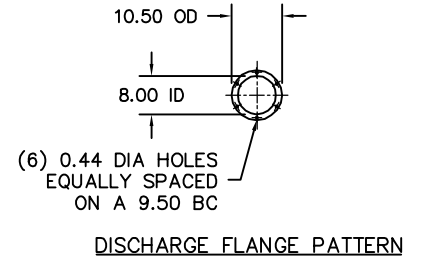
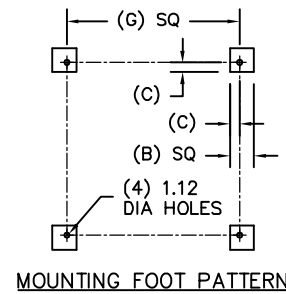
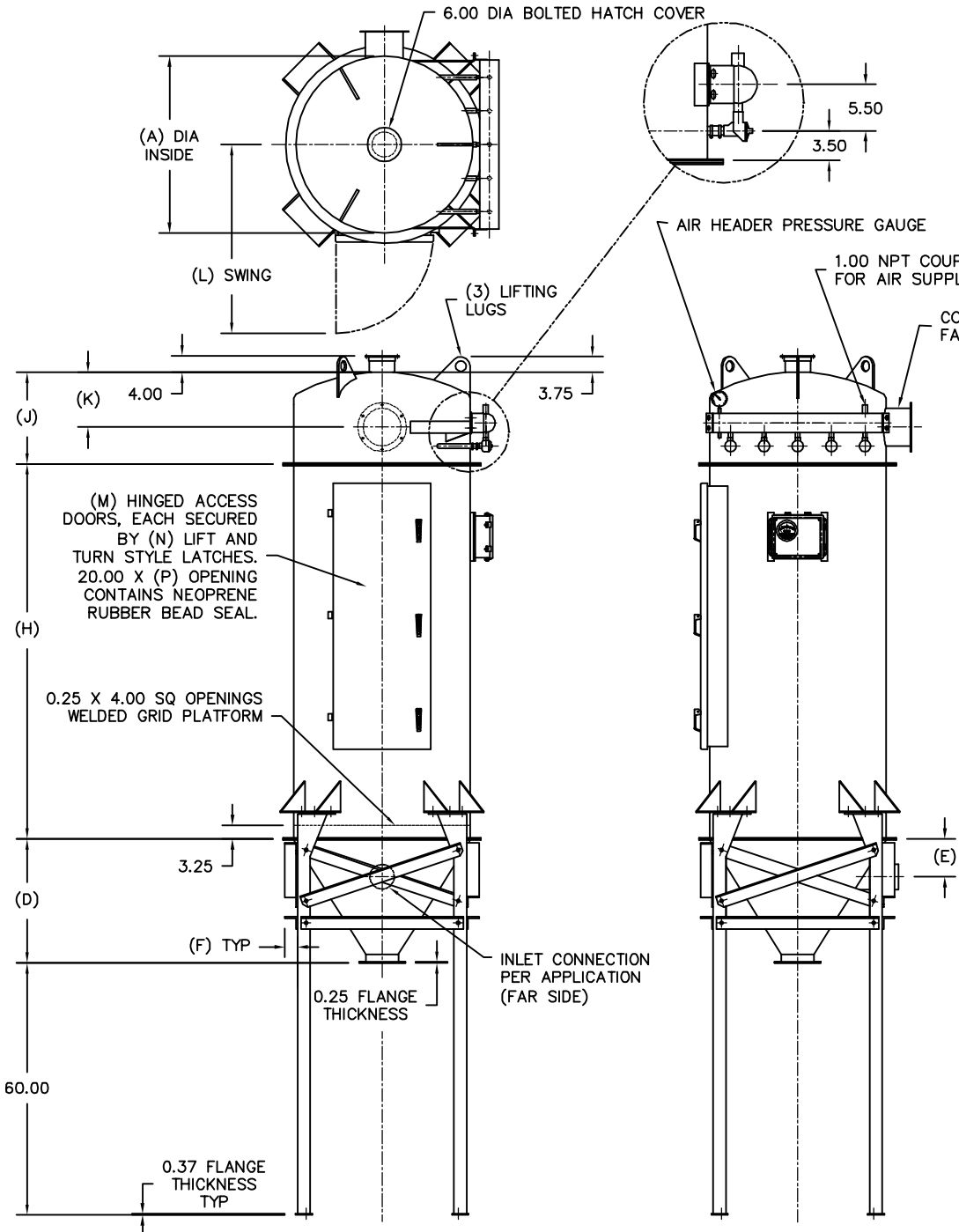
PREWIRING OF ELECTRICAL COMPONENTS TO CFM HOUSING JUNCTION BOX OPTIONAL.

ELECTRICAL ENCLOSURES NEMA 4 STANDARD. NEMA 4X, 7, AND 9 OPTIONAL.

METAL SURFACES ARE POWER TOOL CLEANED, PRIMED, AND FINISHED WITH INDUSTRIAL ENAMEL.

AIR REQUIREMENTS FOR COMPRESSED AIR HEADER ARE (16) CFM @ (80-100) PSI.

SPECIFICATIONS AND/OR DIMENSIONAL DATA ARE SUBJECT TO CHANGE. CONSULT DCL FOR CERTIFIED DRAWINGS.



REV	DATE	BY	DCL		SPECIALISTS IN ADVANCED DESIGN LOADING SYSTEMS		P.O. BOX 125 CHARLEVOIX, MICHIGAN 49720 (231) 547-5600
			TOLERANCES UNLESS OTHERWISE SPECIFIED		DRAWN BY: TLC	SCALE: NONE	
			FRACTIONAL: 1/16" DECIMAL: .005 ANGULAR: 1/2		CHECKED BY: ENG	DATE: 03-04-97	
			TITLE		DRAWING No:		
A	09-15-03	TLC	FR BAG HOUSE STYLE FILTER RECEIVER		FR-10002		