

| MODEL | FITS SPOUT | A | B | C | D | E | F | G | EST WGT |
|---------|------------|-------|-------|--------|-----|--------|-----|-----|---------|
| HA36X48 | EV24 | 48.00 | 36.00 | 288.00 | 4 | 96.00 | 10 | 2 | C/F |
| HA42X42 | EV32 | 42.00 | 42.00 | C/F | C/F | C/F | C/F | C/F | C/F |
| HA36X52 | UN800 | 52.00 | 36.00 | 360.00 | 6 | 144.00 | 14 | 4 | C/F |

GENERAL NOTES:

STANDARD FRAME CONSTRUCTION IS 11 GA MILD STEEL.
304 OR 316 STAINLESS STEEL CONSTRUCTION IS OPTIONAL.

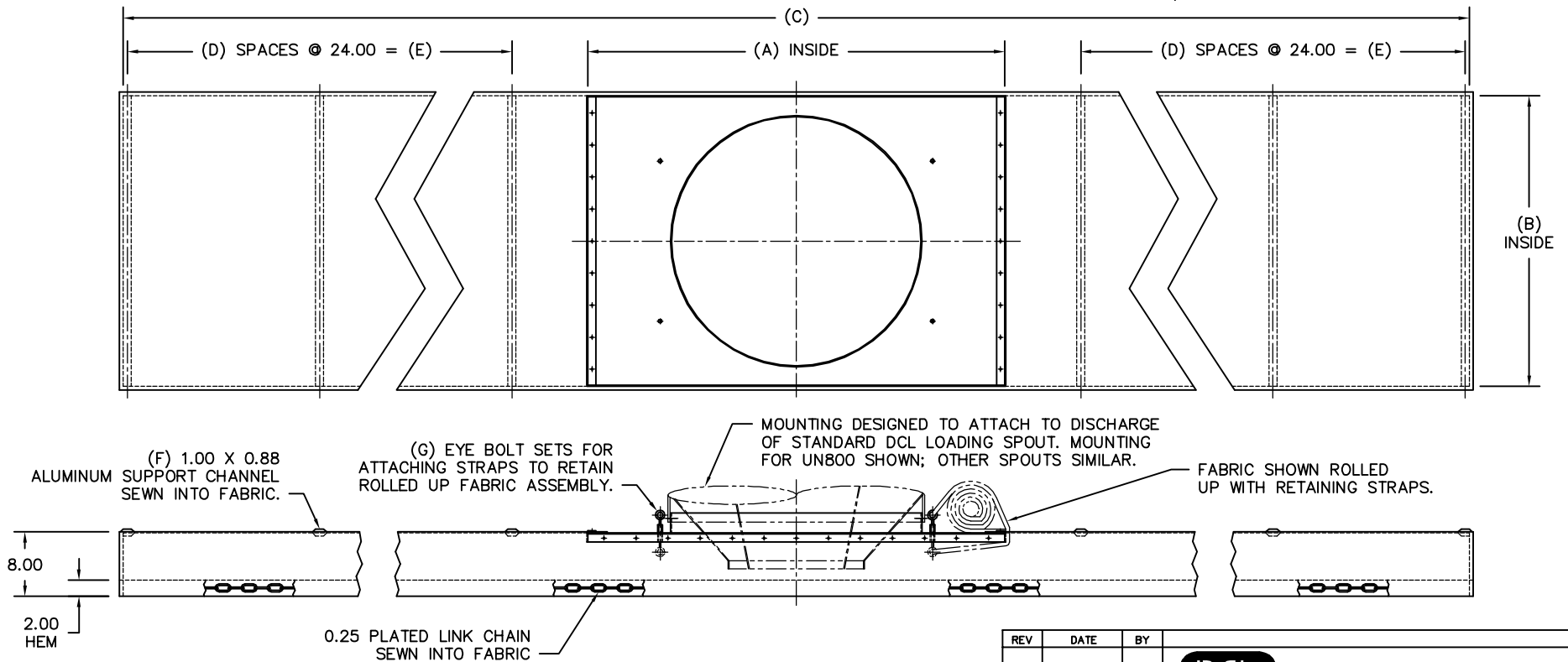
CHAIN-WEIGHTED FABRIC ASSEMBLY CAN BE CONSTRUCTED OF URETHANE/NYLON, HYPALON/NYLON, OR A NUMBER OF OTHER FABRICS. FABRIC ASSEMBLIES COME STANDARD WITH ALUMINUM SUPPORT BARS AND ZINC PLATED CHAIN.

METAL SURFACES ARE POWER TOOL CLEANED, PRIMED, AND FINISHED WITH INDUSTRIAL ENAMEL.

SPECIFICATIONS AND/OR DIMENSIONAL DATA ARE SUBJECT TO CHANGE. CONSULT DCL FOR CERTIFIED DRAWINGS.

MODELS SHOWN ARE COMMON MODELS. OTHER LENGTHS AND WIDTHS, AND ROUND MODELS ARE ALSO AVAILABLE. CONSULT DCL FOR A MODEL TO FIT YOUR APPLICATION.

C/F = CONSULT FACTORY



| REV | DATE | BY | DCL | | SPECIALISTS IN ADVANCED DESIGN LOADING SYSTEMS | | P.O. BOX 125 CHARLEVOIX, MICHIGAN 49720 (231) 547-5600 | |
|-----|----------|-----|---|--|--|--|--|--|
| | | | | | | | | |
| | | | TOLERANCES UNLESS OTHERWISE SPECIFIED | | DRAWN BY: TLC | | SCALE: NONE | |
| | | | FRACTIONAL: 1/16" DECIMAL: .06 ANGULAR: 1/2 | | CHECKED BY: ENG | | DATE: 09-25-99 | |
| | | | TITLE | | ROLLOUT HATCH ADAPTER | | DRAWING No: HA-10001 | |
| A | 09-04-03 | TLC | | | | | | |