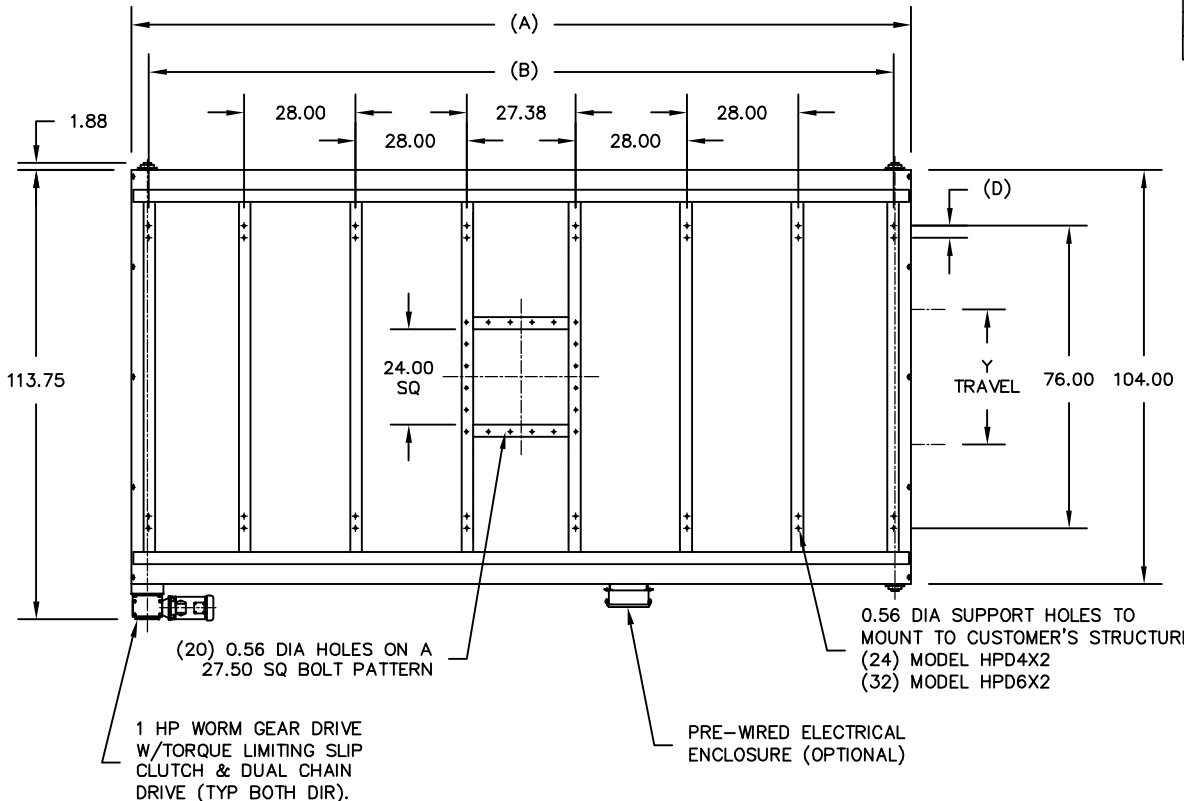


MODEL	X-TRAVEL	Y-TRAVEL	A	B	C	D	EST WGT
HPD4X2	48.00	24.00	148.00	N/A	40.00	2.25	4000 LB*
HPD6X2	72.00	24.00	196.00	187.38	55.00	3.00	5020 LB*



**GENERAL NOTES:**

POSITIONING SPEED: APPROX 5 IN/SEC

HOPPER CONSTRUCTION IS 11 GA MILD STEEL. STAINLESS STEEL CONSTRUCTION AND AR STEEL IS OPTIONAL.

ALL INDUSTRIAL VOLTAGES ARE AVAILABLE FOR ELECTRICAL COMPONENTS.

PREWIRING OF ELECTRICAL COMPONENTS TO SPOUT FRAME JUNCTION BOX OPTIONAL.

ELECTRICAL ENCLOSURES NEMA 4 STANDARD. NEMA 4X, 7, AND 9 OPTIONAL.

METAL SURFACES ARE POWER TOOL CLEANED, PRIMED, AND FINISHED WITH INDUSTRIAL ENAMEL.

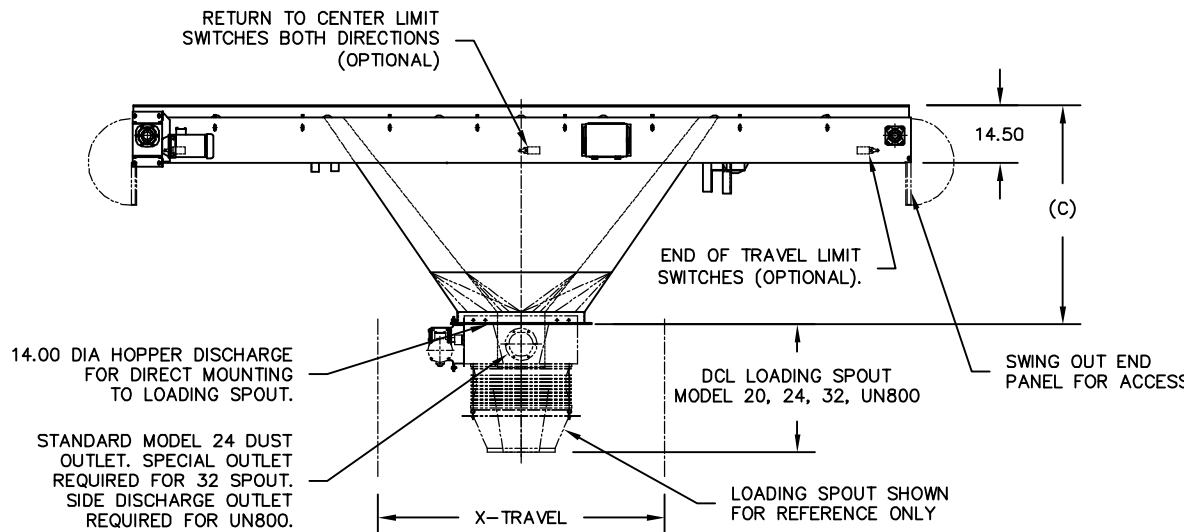
SPECIFICATIONS AND/OR DIMENSIONAL DATA ARE SUBJECT TO CHANGE. CONSULT DCL FOR CERTIFIED DRAWINGS.

**OPTIONS:**

END OF TRAVEL LIMIT SWITCHES

PRE-WIRED ELECTRICAL ENCLOSURE

\*ESTIMATED WEIGHTS DO NOT INCLUDE OPTIONAL EQUIPMENT OR ELECTRICAL COMPONENTS.



REV	DATE	BY	DCL			SPECIALISTS IN ADVANCED DESIGN LOADING SYSTEMS		P.O. BOX 125 CHARLEVOIX, MICHIGAN 49720 (231) 547-5600	
			TOLERANCES UNLESS OTHERWISE SPECIFIED			DRAWN BY: RB		SCALE: NONE	
			FRACTIONAL: 1/16" DECIMAL: .06 ANGULAR: 1/2			CHECKED BY: ENG		DATE: 02-19-02	
			TITLE: HPD DUAL DIRECTION POSITIONER (VENT)			DRAWING No: HPD-10004			
A	04-08-04	JNM							