

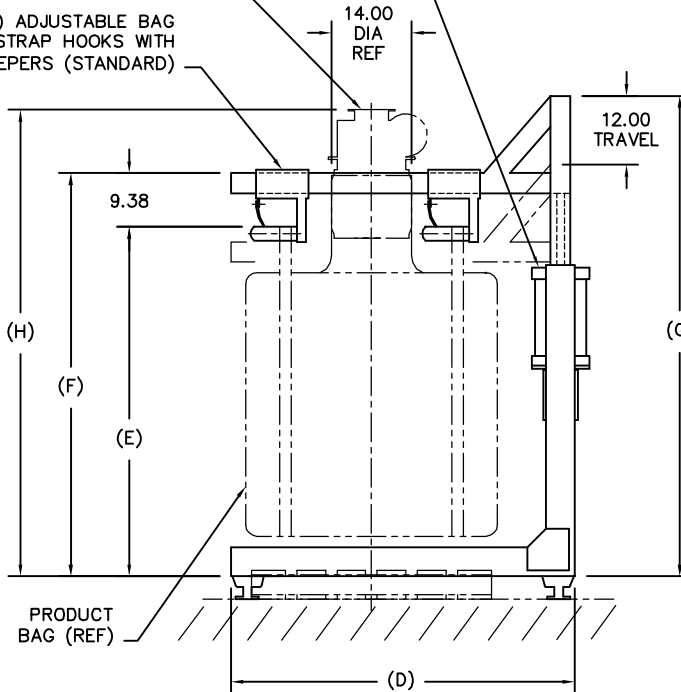
TYPICAL PRODUCT BAG DIMENSIONS. CUSTOMER TO CONFIRM THESE DIMENSIONS.

MODEL	BAG SIZE	A	B	C	D	E	F	G	H	EST WGT
TBFS25	25 CU FT	44.00	29.00	60.00	60.00	44.00	53.38	66.88	65.50	1127 LB*
TBFS30	30 CU FT	44.00	34.00	60.00	60.00	49.00	58.38	71.88	70.50	1150 LB*
TBFS35	35 CU FT	44.00	40.00	60.00	60.00	55.00	64.38	77.88	76.50	1178 LB*
TBFS40	40 CU FT	44.00	46.00	60.00	60.00	61.00	70.38	83.88	82.50	1206 LB*
TBFS45	45 CU FT	44.00	52.00	60.00	60.00	67.00	76.38	89.88	88.50	1234 LB*
TBFS50	50 CU FT	44.00	57.00	60.00	60.00	72.00	81.38	94.88	93.50	1257 LB*
TBFS55	55 CU FT	44.00	63.00	60.00	60.00	78.00	87.38	100.38	99.50	1285 LB*
TBFS60	60 CU FT	44.00	69.00	60.00	60.00	84.00	93.38	106.38	105.50	1312 LB*

AIR CYLINDER ACTUATOR WITH ELECTRICALLY OPERATED SOLENOID VALVE STANDARD. HYDRAULIC CYLINDER, OR ELECTRIC OR MANUAL MACHINE SCREW ACTUATOR (OPTIONAL).

DCL BAGFILL NECK (SEE DRAWING# BFN-10001)

(4) ADJUSTABLE BAG STRAP HOOKS WITH KEEPERS (STANDARD)



**GENERAL NOTES:**

FRAME CONSTRUCTION IS STRUCTURAL STEEL TUBING. STANDARD CONSTRUCTION IS MILD STEEL. STAINLESS STEEL IS OPTIONAL.

METAL SURFACES ARE POWER TOOL CLEANED, PRIMED, AND FINISHED WITH INDUSTRIAL ENAMEL.

FULL-UP, FULL-DOWN LIMIT SWITCHES ARE STANDARD. AN INTERMEDIATE-POSITION SWITCH IS OPTIONAL.

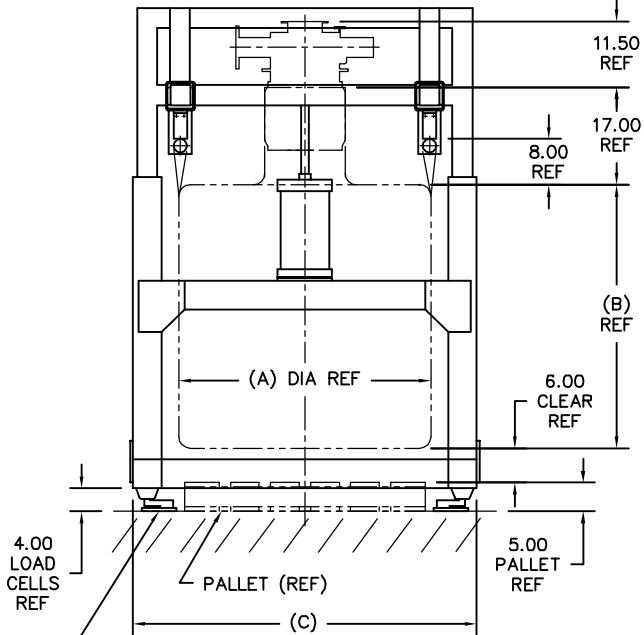
ELECTRICAL COMPONENTS AND ENCLOSURES ARE AVAILABLE IN NEMA 4, 4X, 7, AND 9.

SPECIFICATIONS AND/OR DIMENSIONAL DATA ARE SUBJECT TO CHANGE. CONSULT DCL FOR CERTIFIED DRAWINGS.

ROLLER CONVEYOR, TILT ROLLER CONVEYOR, VIBRATING TABLE, AND POWERED BAG STRAP HOOKS ARE OPTIONAL.

FOR ROLLER CONVEYOR AND/OR VIBRATING GRID TABLE, ADD 20.00 TO DIMENSIONS (E), (F), (G), AND (H).

\*ESTIMATED WEIGHTS DO NOT INCLUDE OPTIONAL EQUIPMENT OR ELECTRICAL COMPONENTS.



(4) LOAD CELLS PROVIDED AS STANDARD. PLATFORM WEIGH SCALE (OPTIONAL).

REV	DATE	BY	DCL		SPECIALISTS IN ADVANCED DESIGN LOADING SYSTEMS		P.O. BOX 125 CHARLEVOIX, MICHIGAN 49720 (231) 547-5600	
			TOLERANCES UNLESS OTHERWISE SPECIFIED		DRAWN BY: TLC		SCALE: NONE	
			FRACTIONAL: 1/16" DECIMAL: .005 ANGULAR: 1/2		CHECKED BY: ENG		DATE: 10-06-92	
			TITLE		DRAWING No:			
A			10-07-02		TLC		TBFS TWO POST BAGFILL STATION TBFS-10001	