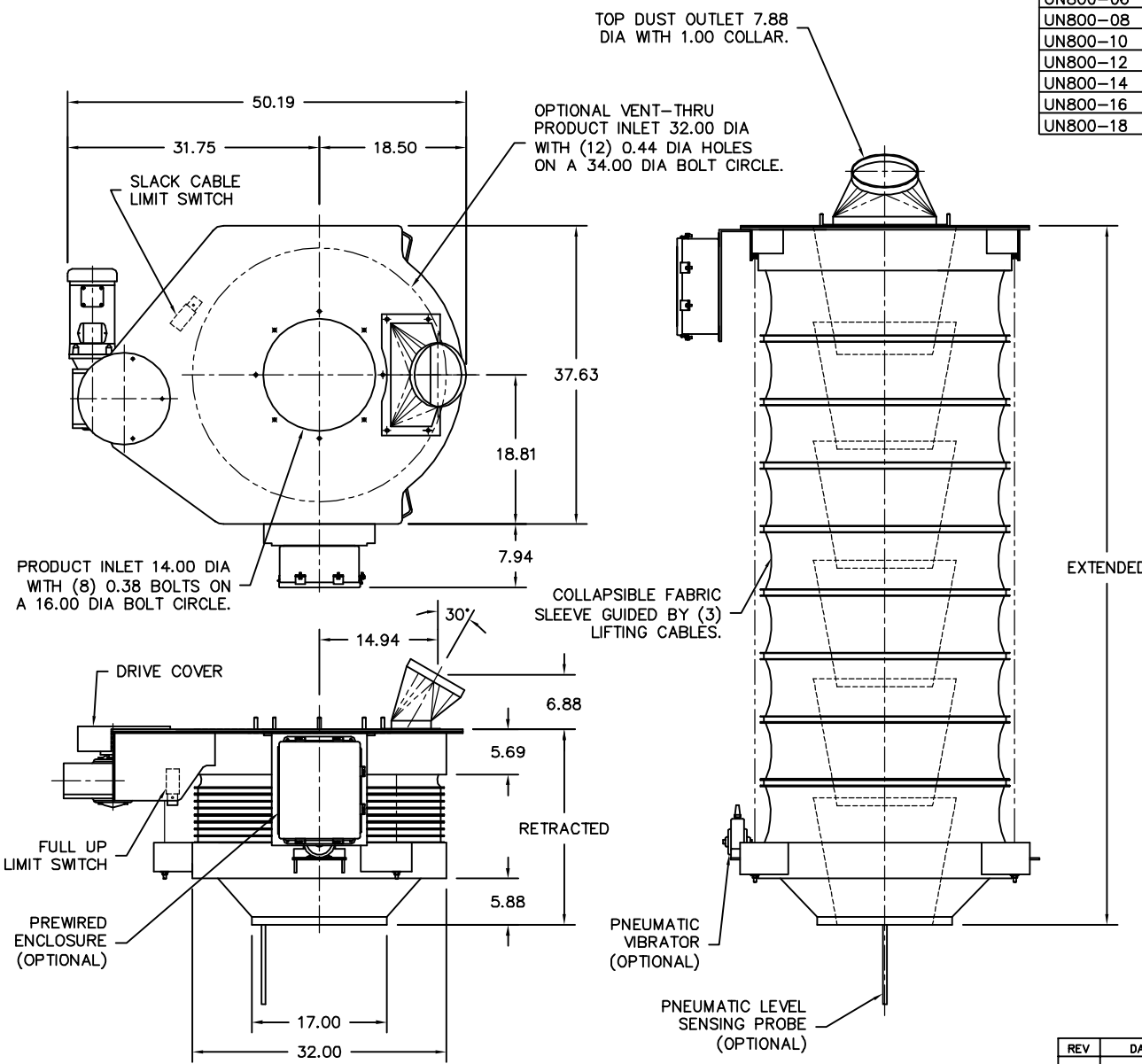


MODEL	TRAVEL	RETR	EXTD	URE WGT	STL WGT	URE HP	STL HP
UN800-02	24.00	18.75	42.75	543 LB	586 LB	1 HP	1 HP
UN800-04	48.00	21.50	69.50	576 LB	662 LB	1 HP	1 HP
UN800-06	72.00	24.50	96.50	609 LB	738 LB	1 HP	1 HP
UN800-08	96.00	27.00	123.00	646 LB	817 LB	1 HP	1 HP
UN800-10	120.00	28.38	148.38	673 LB	867 LB	1 HP	1 HP/B
UN800-12	144.00	31.13	175.13	706 LB	943 LB	1 HP	1.5 HP
UN800-14	168.00	33.88	201.88	743 LB	1022 LB	1 HP	1.5 HP/B
UN800-16	192.00	36.63	228.63	777 LB	1099 LB	1 HP/B	2 HP
UN800-18	216.00	38.00	254.00	804 LB	1147 LB	1.5 HP	2 HP/B



GENERAL NOTES:

LOADING CAPACITY: 450 CFM
 AVERAGE AIR WITHDRAWAL: 1400 TO 1800 CFM
 LIFTING SPEED: 16 FPM AVG

ALL INDUSTRIAL VOLTAGES ARE AVAILABLE FOR ELECTRICAL COMPONENTS.

PREWIRING OF ELECTRICAL COMPONENTS TO SPOUT FRAME JUNCTION BOX OPTIONAL.

ELECTRICAL ENCLOSURES NEMA 4 STANDARD. NEMA 4X, 7, AND 9 OPTIONAL.

COLLAPSIBLE FABRIC SLEEVE CAN BE CONSTRUCTED OF URETHANE/NYLON, HYPALON/NYLON, OR A NUMBER OF OTHER FABRICS. SLEEVES COME STANDARD WITH ALUMINUM OUTER AND INNER RINGS.

METAL SURFACES ARE POWER TOOL CLEANED, PRIMED, AND FINISHED WITH INDUSTRIAL ENAMEL.

LOADING CAPACITY LISTED IS APPROXIMATE AND BASED ON FREE FLOWING PRODUCTS. CONSULT DCL FOR ACTUAL REQUIREMENTS.

AIR WITHDRAWAL REQUIREMENTS ARE AVERAGE. CONSULT DCL FOR FINAL RECOMMENDATIONS.

CONE CONSTRUCTION NOTES: CONTAINED INNER DESIGN STANDARD WITH 0.13 AR STEEL, AND 0.13 304 OR 316 STAINLESS STEEL. OTHER MATERIALS AVAILABLE TO SUIT APPLICATION.

SPECIFICATIONS AND/OR DIMENSIONAL DATA ARE SUBJECT TO CHANGE. CONSULT DCL FOR CERTIFIED DRAWINGS.

OPTIONS:

150# INLET FLANGE. ADDS 3.00 TO RETRACTED HEIGHT.

LEVEL SENSORS; TILT PROBE, RF PROBE, CAPACITANCE PROBE, PNEUMATIC PROBE.

PNEUMATIC VIBRATOR KIT REQUIRES (40) CFM @ (80) PSI.

REV	DATE	BY	DCL		SPECIALISTS IN ADVANCED DESIGN LOADING SYSTEMS		P.O. BOX 125 CHARLEVOK, MICHIGAN 49720 (231) 547-5600	
C	10-06-03	JNM	TOLERANCES UNLESS OTHERWISE SPECIFIED FRACTIONAL: 1/16" DECIMAL: .005 ANGULAR: 1/2		DRAWN BY: JNM	SCALE: NONE		
B	04-23-02	JNM			CHECKED BY: ENG	DATE: 01-04-98		
A	09-26-00	JNM	TITLE UN800 LOADING SPOUT (EV STYLE)		DRAWING No:		UN800-10001	