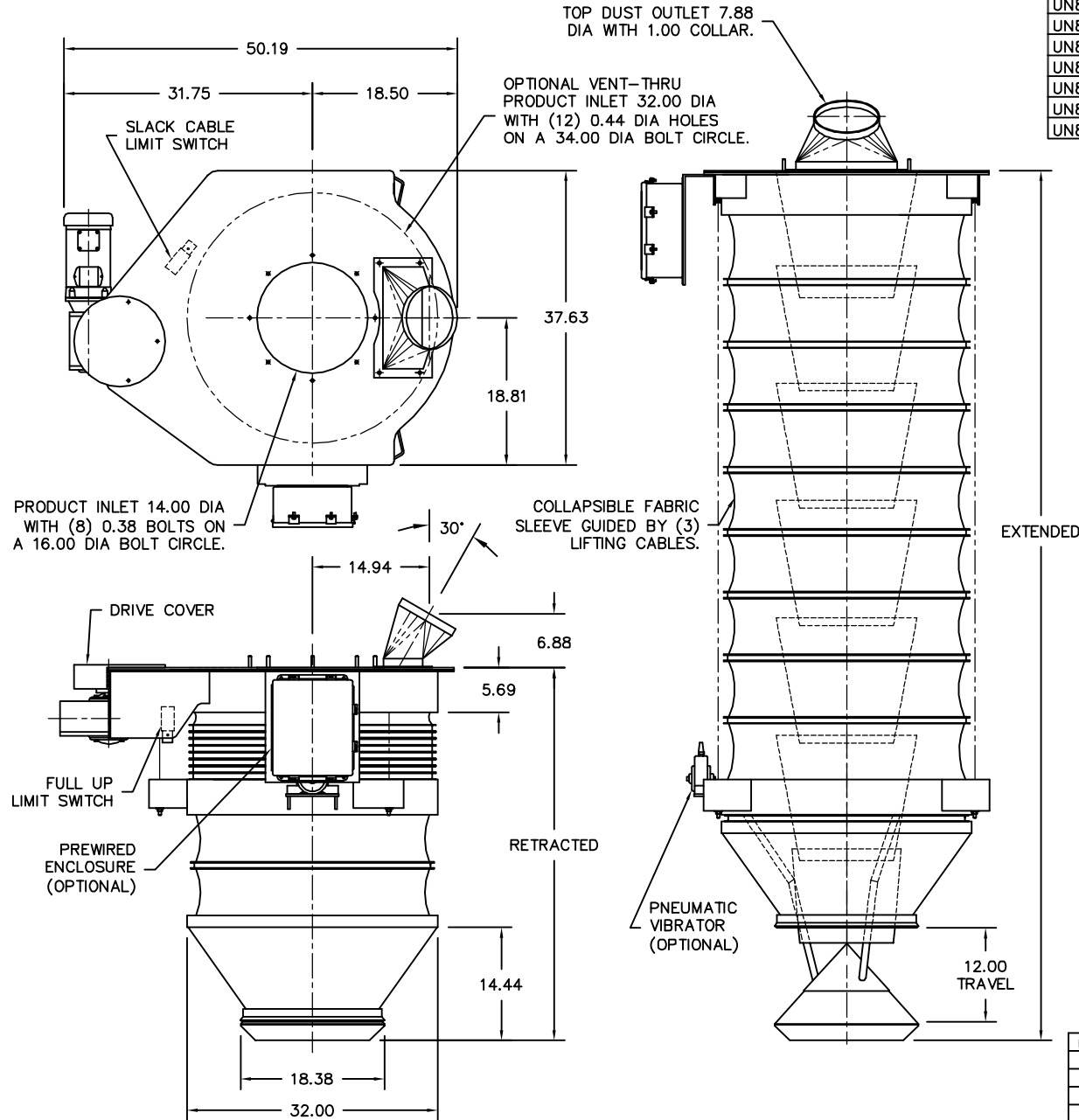


MODEL	TRAVEL	RETR	EXTD	URE WGT	STL WGT	URE HP	STL HP
UN800-02	24.00	41.75	65.75	621 LB	664 LB	1 HP	1 HP
UN800-04	48.00	44.50	92.50	654 LB	740 LB	1 HP	1 HP
UN800-06	72.00	47.50	119.50	687 LB	816 LB	1 HP	1 HP
UN800-08	96.00	50.00	146.00	724 LB	895 LB	1 HP	1 HP/B
UN800-10	120.00	51.38	171.38	751 LB	945 LB	1 HP	1.5 HP
UN800-12	144.00	54.13	198.13	784 LB	1021 LB	1 HP/B	1.5 HP/B
UN800-14	168.00	56.88	224.88	821 LB	1100 LB	1.5 HP	2 HP
UN800-16	192.00	59.63	251.63	855 LB	1177 LB	1.5 HP	1.5 HP/D
UN800-18	216.00	61.00	277.00	882 LB	1225 LB	1.5 HP	1.5 HP/D



GENERAL NOTES:

LOADING CAPACITY: 450 CFM
 AVERAGE AIR WITHDRAWAL: 1400 TO 1800 CFM
 LIFTING SPEED: 16 FPM AVG

ALL INDUSTRIAL VOLTAGES ARE AVAILABLE FOR ELECTRICAL COMPONENTS.

PREWIRING OF ELECTRICAL COMPONENTS TO SPOUT FRAME JUNCTION BOX OPTIONAL.

ELECTRICAL ENCLOSURES NEMA 4 STANDARD. NEMA 4X, 7, AND 9 OPTIONAL.

COLLAPSIBLE FABRIC SLEEVE CAN BE CONSTRUCTED OF URETHANE/NYLON, HYPALON/NYLON, OR A NUMBER OF OTHER FABRICS. SLEEVES COME STANDARD WITH ALUMINUM OUTER AND INNER RINGS.

METAL SURFACES ARE POWER TOOL CLEANED, PRIMED, AND FINISHED WITH INDUSTRIAL ENAMEL.

LOADING CAPACITY LISTED IS APPROXIMATE AND BASED ON FREE FLOWING PRODUCTS. CONSULT DCL FOR ACTUAL REQUIREMENTS.

AIR WITHDRAWAL REQUIREMENTS ARE AVERAGE. CONSULT DCL FOR FINAL RECOMMENDATIONS.

CONE CONSTRUCTION NOTES: CONTAINED INNER DESIGN STANDARD WITH 0.13 AR CONES, AND 0.13 304 OR 316 STAINLESS STEEL. OTHER MATERIALS AVAILABLE TO SUIT APPLICATION.

SPECIFICATIONS AND/OR DIMENSIONAL DATA ARE SUBJECT TO CHANGE. CONSULT DCL FOR CERTIFIED DRAWINGS.

OPTIONS:

150# INLET FLANGE. ADDS 3.00 TO RETRACTED HEIGHT.

LEVEL SENSORS; RF PROBE, CAPACITANCE PROBE, PNEUMATIC PROBE.

AIR VIBRATOR KIT REQUIRES (40) CFM @ (80) PSI.

REV	DATE	BY	DCL		SPECIALISTS IN ADVANCED DESIGN LOADING SYSTEMS		P.O. BOX 125 CHARLEVOIX, MICHIGAN 49720 (231) 547-5600	
					TOLERANCES UNLESS OTHERWISE SPECIFIED FRACTIONAL: 1/16" DECIMAL: .006 ANGULAR: 1/2		DRAWN BY: JNM	SCALE: NONE
							CHECKED BY: ENG	DATE: 01-20-98
B	04-24-02	JNM	TITLE		UN800 LOADING SPOUT (SELF SEALING)		DRAWING No: UN800-10002	
A	09-27-00	JNM						